



# 2019 Evolution Sails Nelson Regatta

## Keelboat Fleet Racing

Friday 18<sup>th</sup> – Tuesday 22<sup>nd</sup> January 2019

### Sailing Instructions

**The Organising Authority is the Tasman Bay Cruising Club Inc. (TBCC)**

PO Box 5062, Port Nelson, Nelson 7043

---

#### 1. Rules

##### General and Safety Rules

- 1.1. The regatta will be governed by the rules as defined in the Racing Rules of Sailing.
- 1.2. All yachts shall comply with Part II of the Yachting New Zealand Safety Regulations Category 5 for the Invitation Race and Race Days 1 & 2. For Races 4-7 Part II of the Yachting New Zealand Safety Regulations Category 4 modified as follows shall apply:
  - a. One safety harness and double clip tether per crew member, and
  - b. A personal locator beacon (PLB) 406 MHz or EPIRB 406 MHz marine. The 406 MHz EPIRB must be registered with Rescue Co-ordination Centre of Maritime New Zealand and be in service in accordance with the manufacturers recommendations, and
  - c. Jackstays in accordance with 17.23K of Yachting New Zealand Safety Regulations, and
  - d. A Mounted or Handheld GPS, and
  - e. At least two (2) Red Parachute flares, and
  - f. A copy of Abel Tasman Chart NZ 6144. A copy of Tasman Bay Chart NZ 614 is also recommended, and
  - g. A Grab Bag.  
The equipment in the grab bag may be counted as part of the general requirements of Category 4 and the modifications specified above.
- 1.3. All boats must have an operational VHF marine radio transmitter capable of receiving and transmitting on VHF channels 16, 28, 60 and 77.
- 1.4. Changes in the number of crew are permitted. Numbers sailing on each boat will be confirmed by the Race Committee prior to each days sailing.
- 1.5. Safety checks of any boat may be made at any time.
- 1.6. The International Rules of Preventing Collisions at Sea shall apply between boats racing from sunset to sunrise as published in the New Zealand Almanac.

##### PHRF Rules

- 1.7. PHRF certificate compliance measurement may be conducted at any time.

## Changes to Racing Rules

- 1.8. Any changes to Rules will be noted where applicable.
- 1.9. For protests where only a rule of Part 2 or rule 31 is alleged to have been broken an arbitration hearing will be offered prior to any formal hearing.
- 1.10. Rule 44.1, Taking a Penalty, is changed to permit a boat that has broken a rule of Part 2, *When Boats Meet*, or rule 31, *Touching a Mark*, to take a penalty after racing but prior to any protest hearing. Her penalty shall be a scoring penalty as calculated in rule 44.3(c), Scoring Penalty, equal to 40% of the number of entries in her fleet or 50% of the difference between her finishing position and the number of entries in her fleet, whichever is less. The scoring abbreviation for this penalty is SPI.

## **2. Notices to Competitors**

- 2.1. Notices to competitors will be posted on the official notice board located in the TBCC.
- 2.2. Any Notices to competitors that apply to Coastal Races will be broadcast via VHF.

## **3. Changes to Sailing Instructions**

- 3.1. Any change to the Sailing Instructions will be posted before 0900 hours on the day it will take effect, except that any change to the schedule of races will be posted by 2000 hours on the day before it will take effect. For Coastal races these will be broadcast via VHF.

## **4. Signals Made Ashore**

- 4.1. Signals made ashore will be displayed at the TBCC.
- 4.2. For the purpose of the Coastal Races, "Signals Made Ashore" shall be taken to mean the Race Committee Signal Boat.
- 4.3. When flag Y is displayed, rule 40 applies at all times while afloat. This changes the Part 4 preamble.
- 4.4. Any signal shown with one or more class flags shall apply to those classes only.

## **5. Schedule of Races**

### **5.1. Briefing**

- a. The briefing for the Invitation Race is scheduled for 1630 hours on Friday 18<sup>th</sup> January 2019 in the TBCC
- b. The briefing for the Saturday Racing is scheduled for 0930 hours on Saturday 19<sup>th</sup> January 2019 in the TBCC
- c. The Regatta briefing is scheduled for 0930hours on Sunday 20<sup>th</sup> January 2019 in the TBCC.
- d. The Rally briefing for races 4 – 6 will be held at 0830hours on Monday 21<sup>st</sup> January 2019 in the TBCC.

### **5.2. Dates of racing and scheduled warning signal:**

<b>Date</b>	<b>Race Day Number</b>	<b>Time of First Warning Signal</b>	<b>Number of Races</b>
Friday 18 January	Invitation Race	1800hours	1
Saturday 19 January	1	1100hours	3 / 1*
Sunday 20 January	2	1100hours	3 / 1*
Monday 21 January	3	0955hours	1
Tuesday 22 January	4	0955hours	2

- 5.3. 6 races are scheduled for any special division. Refer to NOR 11.2. On Saturday and Sunday, this division will race one race per day (indicated with an '\*' in the above table).
- 5.4. 10 races are scheduled for all other divisions.
- 5.5. Refer to NOR 11 for scoring.
- 5.6. For subsequent races on the same day, the scheduled start time for the next race will be as soon as practicable after the last boat finishes the preceding race, or as determined by the Race Officer, and will be broadcast via VHF.

5.7. To alert boats that a race or sequence of races will begin soon, the orange starting line flag will be displayed with one sound at least four minutes before a warning signal is displayed.

## **6. Classes and Class Flags**

6.1. The Organising Authority will split the fleet into a minimum two (2) divisions, at its discretion, based on the number, type or handicap of boats entered.

6.2. The divisional allocation and handicaps shall be posted on the notice board at the TBCC by 1800hours Friday 18 January 2019. Handicaps may be altered or updated based on performance during the regatta.

6.3. The class flags for each division shall be advised at the briefings.

6.4. Code Flag "T" will be used as the warning signal to designate a combined start for all divisions.

## **7. Racing Areas**

7.1. Attachment A shows the location of the racing areas.

## **8. Courses**

### Inshore Races

8.1. The diagrams in attachment B show the courses.

8.2. No later than the warning signal, the race committee signal boat may display the approximate compass bearing of the first leg and the approximate distance in nautical miles from the starting line to Mark 1. The Course to be sailed will be transmitted via VHF and signalled using numeral pennant flags flown below a class flag.

8.3. A Notice to Competitors may be issued for the "Cruising Division" (if constituted) and will be advised at the time of the Briefing. Refer to NOR 9.1 and NOR11.6.

8.4. When flag 'F' be displayed, the course will be a special course and shall be broadcast on VHF channel 77 approximately 15 minutes prior to the start time.

### Coastal Races

8.5. The courses will be confirmed at the briefing for Races 4-6. Refer to NOR 5.2d.

8.6. Instruction 17.4 describes any exclusions zones for Races 4-6.

## **9. Marks**

### Inshore Races

9.1. The marks are described in attachment B.

### Coastal Races

9.2. The marks will be described at the briefing for Races 4-6. Refer to NOR 5.2d.

## **10. The Start**

10.1. The starting line will be between a staff displaying an orange flag on the race committee signal boat and the starting mark at the port end.

10.2. Boats whose warning signal has not been made shall avoid the starting area during the starting sequence for other races.

10.3. A boat starting later than four minutes after her starting signal will be scored Did Not Start. This changes rule A4.

10.4. If any part of a boat's hull, crew or equipment is on the course side of the starting line at the start signal, the race committee may attempt to broadcast her name and/or sail number on VHF. Failure to make a broadcast will not be grounds for a request for redress. This changes rule 62.1(a).

## **11. Change of the Next Leg of the Course**

11.1. To change the next leg of the course, the race committee will lay a new mark (or move the finishing line) and remove the original mark as soon as practicable. Should a subsequent change be made, it will be replaced by an original mark.

## 12. Shortening the Course

11.2. A race may be shortened by displaying Code Flag "S" on or near a mark. Boats, on rounding the mark shall proceed directly to, and cross, the finishing line. For Coastal Races, the shortening of a course may be done via broadcast on VHF. In these cases Rule 32.2 will not apply.

## 12. The Finish

### Inshore Races:

12.1. The finishing line will be between an blue flag on the race committee boat and the finishing mark at the other end (see diagrams in Attachment B).

### Coastal Races:

12.2. The finishing lines will be described at the briefing for Races 4-6. Refer to NOR 5.2b.

## 13. Time Limits

### Inshore Races

13.1. Boats failing to finish within 30 minutes of the first boat in their division will be scored Did Not Finish (DNF) without a hearing. This changes Rules 35, A4 & A5.

### Coastal Races

13.2. Boats failing to finish within 2 hours of the first boat in their division to finish will be scored Did Not Finish without a hearing. This changes rules 35, and A4 and A5.

## 14. Protests and Requests for Redress

15.1 Immediately after finishing a boat intending to protest shall, in addition to the requirements of Rule 61.1 (a), inform the race committee at the finishing line of her intention to protest and the identity of the boat(s) protested against. The protesting boat must receive acknowledgement from the race committee. This changes Rule 61.

15.2 Protest forms are available at the race office. Protests will be delivered to the race office within the appropriate time limit. For races 4, 5 and 6 protest forms must be delivered to the committee boat.

15.3 The protest time limit is 60 minutes after the last boat has finished the last race of the day.

15.4 Rule 44.1 is changed to permit a boat that has broken a rule of Part 2 or Rule 31 to take a penalty after racing but prior to any protest hearing. Her penalty shall be a scoring penalty calculated in rule 44.3(c) equal to 40% of the number of entries in her fleet or 50% of the difference between her finishing position and the number of entries in her fleet, whichever is less.

15.5 For protests where only a rule of Part 2 or Rule 31 is alleged to have been broken, an arbitration hearing will be offered prior to any formal hearing. Yachting New Zealand regulation 4.5.5 will apply (This changes Rule 44.1).

15.6 Protest will be heard in the race committee room as soon as possible after a protest is lodged. The schedule for protest hearings will be posted on the Official Notice Board within 15 minutes of the closing of the Protest time.

15.7 On the last day of the regatta a request for reopening a hearing shall be delivered:

- (a) Within the protest time limit if the party requesting reopening was informed of the decision on the previous day;
- (b) no later than 30 minutes after the party requesting reopening was informed of the decision on that day.

This changes rule 66.

## 15. Scoring

15.1. Boats will be scored in divisions. Races will be scored on General Handicap and PHRF. A scoring system will not be used in a race unless three or more boats that qualify for that scoring system start in that race.

15.2. Two races will be required to be completed to constitute a series.

15.3. All races will count for a boats series score.

15.4. All PHRF results will be calculated using the "Inshore TCF".

15.5. The General Handicap will be a formula-derived performance handicap that may be adjusted after each race based on the performances for that race and the prior races, if any.

15.6. A boat who enters for racing as per NOR 4.3 shall receive results for those races, and will be eligible for any prizes awarded, but will have their scores removed for calculating the overall Regatta results.

## **16. Safety Regulations**

16.1. Not more than one (1) hour prior to the commencement of racing on each day each boat must sign on by calling the Race Committee Signal Boat on VHF and confirming the boat name. The Race Committee will announce via VHF when they are ready to accept boat's signing on.

16.2. For all Coastal racing, boats are to maintain a listening watch on VHF Channel 28 or 60. Boats will be called to report their position via VHF at 1400, 1700 and 2100 hours daily.

16.3. A boat that retires from a race shall notify the race committee as soon as possible via VHF.

17.4 Boats may pass between but not enter the various spat catching areas in Tasman Bay. These areas are shown, and the positions of the outer marking buoys are detailed in appendix C.

Refer to Attachment C for maps showing locations deemed as obstructions. The TBCC has been advised by the TDC Harbour Master that these coordinates are not guaranteed and that skippers should rely primarily on the visual identification of these marks for navigation.

## **17. Replacement of Crew**

17.1. Substitution of crew is allowed.

## **18. Equipment and Measurement Checks**

18.1. Any boat or equipment may be inspected at any time for compliance with safety requirements, rating certificates and/or Sailing Instructions.

18.2. On the water, a boat may be instructed by the race committee to:

- (a) proceed immediately to a designated area for inspection; and
- (b) leave all equipment including sails, sheets and lifelines in the configuration in which it completed the race.

18.3. A boat that is racing in a measurement configuration that is at variance to the issued IRC and/or PHRF certificate or these Sailing Instructions may be subject to protest.

## **19. Advertising**

19.1. There are no advertising restrictions in place.

## **20. Haul-Out Restrictions**

20.1. There is no restriction on boats being hauled out during the regatta.

## **21. Diving Equipment and Plastic Pools**

21.1. There is no restriction on underwater breathing apparatus and plastic pools or their equivalent being used around keelboats during the regatta.

## **22. Radio Communication**

22.1. A boat shall neither make radio transmissions while racing nor receive radio communications not available to all boats. This restriction also applies to use of mobile telephones.

22.2. All communications between competitors and the Race Committee shall be via designated VHF channels unless the Race Committee decides otherwise.

## **23. Prizes**

23.1. Prizes will be awarded at the discretion of the Organising Authority and may include individual race, and overall results.

## **24. Disclaimer of Liability**

24.1. Competitors participate in all races entirely at their own risk. Refer to rule 4. The Organising Authority will not accept any liability for material damage or personal injury or death sustained in conjunction with or prior to, during or after the race.

## **25. Insurance**

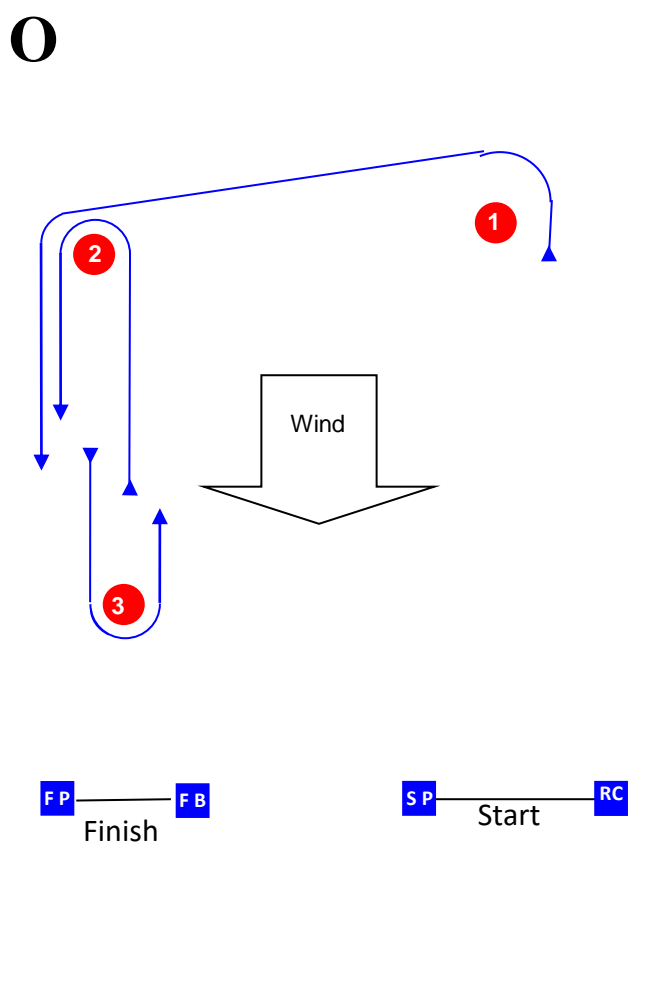
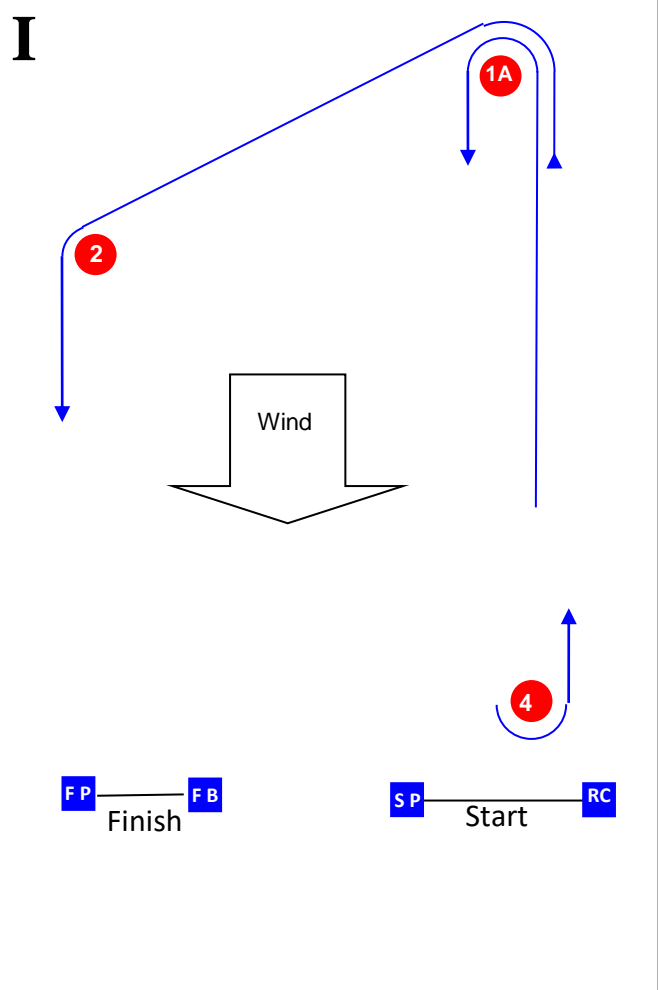
25.1. Each boat that races shall be insured with valid third-party liability insurance with a minimum cover of \$2,500,000.00 per event, or the equivalent.

## Attachment A – Tasman Bay

---



**Course Illustration – Trapezoid Courses – All rounding marks to PORT**



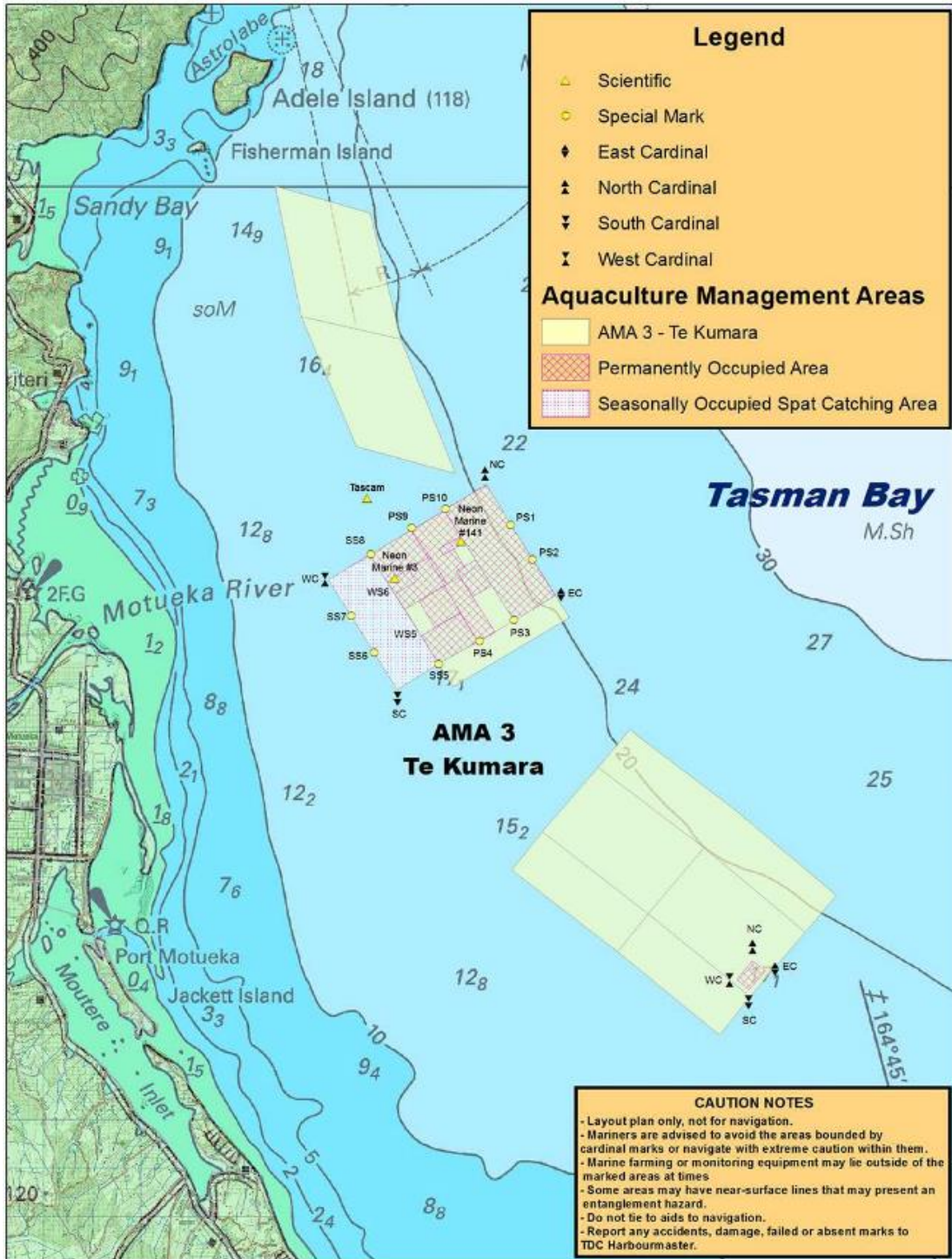
Signal	Mark Rounding Order
1	Start – 1A – 4 – 1A – 2 – Finish
2	Start – 1A – 4 – 1A – 4 – 1A – 2 – Finish
3	Start – 1A – 4 – 1A – 4 – 1A – 4 – 1A – 2 – Finish

Signal	Mark Rounding Order
4	Start – 1 – 2 – Finish
5	Start – 1 – 2 – 3 – 2 – Finish
6	Start – 1 – 2 – 3 – 2 – 3 – 2 – Finish

Mark	Description
1A 1 4	Orange Cylindrical buoy
2	Orange Cylindrical buoy
3	Orange Cylindrical buoy
RC Race Committee Signal Boat	<b>TO BE ADVISED AT BRIEFING</b>
SP Starting mark port end	Tapered Orange self-inflating buoy
FB Finishing Boat port end	<b>TO BE ADVISED AT BRIEFING</b>
FP Finishing mark starboard end	Tapered Yellow self-inflating buoy
Replacement Marks	Red Triangular or Conical buoys



# Attachment C – Aquaculture Management Areas



## Approved Tasman Bay Marine Farm Layout Plan (1st November 2015 - 30th April 2016)





**NZ 220(T)/16 NEW ZEALAND – South Island – North Coast – Tasman Bay / Te Tai-o-Aorere and Golden Bay / Mohua. Spat Catching Areas**

1. Seasonal spat catching areas have been established in Tasman Bay / Te Tai-o-Aorere and Golden Bay / Mohua until June 2017. The perimeter corners are identified by cardinal marks at the following positions:

Tasman Bay / Te Tai-o-Aorere	(a)	41° 03'.32S., 173° 07'.21E.
	(b)	41° 04'.55S., 173° 08'.24E.
	(c)	41° 05'.60S., 173° 05'.91E.
	(d)	41° 04'.38S., 173° 04'.89E.
	(e)	41° 08'.57S., 173° 11'.15E.
	(f)	41° 08'.71S., 173° 11'.40E.
	(g)	41° 08'.98S., 173° 11'.10E.
	(h)	41° 08'.84S., 173° 10'.86E.
Golden Bay / Mohua	(i)	40° 45'.11S., 172° 50'.88E.
	(j)	40° 46'.03S., 172° 52'.88E.
	(k)	40° 47'.61S., 172° 51'.33E.
	(l)	40° 46'.66S., 172° 49'.33E.
	(m)	40° 42'.85S., 172° 46'.09E.
	(n)	40° 42'.96S., 172° 46'.66E.
	(o)	40° 43'.42S., 172° 46'.75E.
	(p)	40° 43'.30S., 172° 46'.18E.

2. Mariners are advised to exercise caution when navigating in the area.

**Charts temporarily affected: NZ 61, NZ 614, NZ 6142, NZ 6144, NZ300614, NZ406142, NZ406144**

Tasman Bay Ring Road Spat Catching Ltd., Golden Bay Ring Road Spat Catching Ltd., Challenger Scallop Enhancement Co. Ltd. & Golden Bay Mussels Ltd.  
HITS 6144/49